

Human Nectin-2/CD112 Protein



Cat. No. NEC-HM202

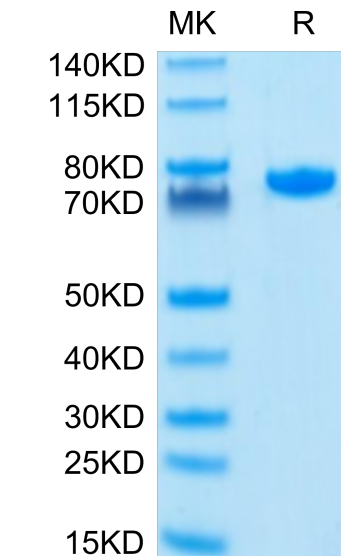
Description	
Source	Recombinant Human Nectin-2/CD112 Protein is expressed from HEK293 with hFc tag at the C-Terminus. It contains Gln32-Leu360.
Accession	Q92692-2
Molecular Weight	The protein has a predicted MW of 62.3 kDa. Due to glycosylation, the protein migrates to 70-80 kDa based on Bis-Tris PAGE result.
Endotoxin	Less than 1 EU per µg by the LAL method.
Purity	> 95% as determined by Bis-Tris PAGE > 95% as determined by HPLC

Formulation and Storage	
Formulation	Lyophilized from 0.22µm filtered solution in PBS (pH 7.4). Normally 8% trehalose is added as protectant before lyophilization.
Reconstitution	Dissolve the lyophilized protein in distilled water. Please refer to the Certificate of Analysis for detailed instructions.
Storage	-20 to -80°C for 12 months as supplied from date of receipt. -80°C for 3 months after reconstitution. Recommend to aliquot the protein into smaller quantities for optimal storage. Please minimize freeze-thaw cycles.

Background	
Nectin-2 is an adhesion molecule that has been reported to play a role in tumor growth, metastasis and tumor angiogenesis. Nectin-2 expression in ovarian cancer may support tumor cell adhesion, leading to growth and lymph node metastasis. Effect of VEGF on Nectin-2 expression as well as permeability was investigated in HUVEC.	

Assay Data

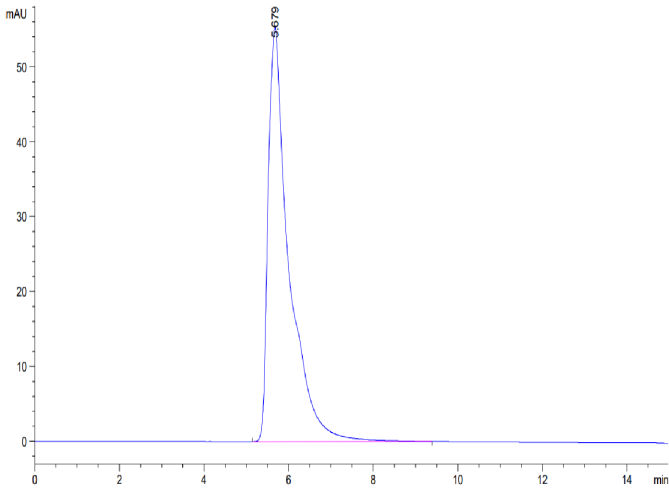
Bis-Tris PAGE



Human Nectin-2 on Bis-Tris PAGE under reduced condition. The purity is greater than 95%.

SEC-HPLC

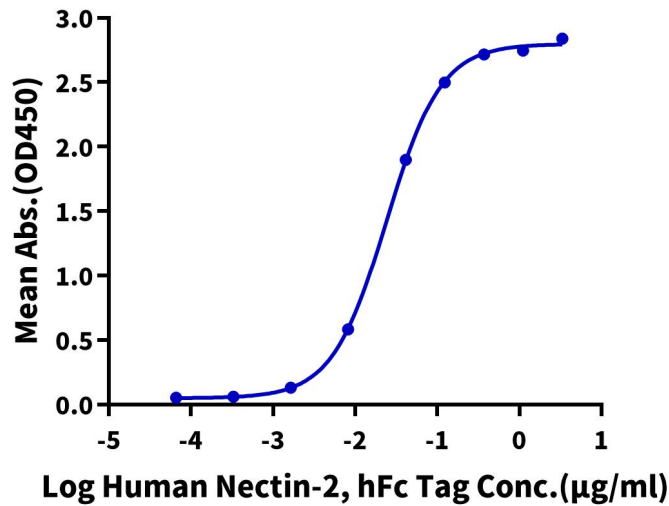
Assay Data



The purity of Human Nectin-2 is greater than 95% as determined by SEC-HPLC.

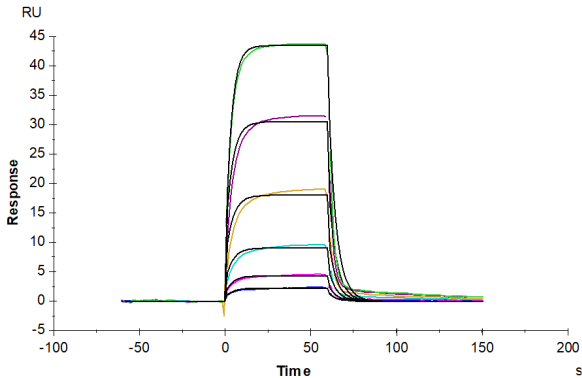
ELISA Data

Human Nectin-2, hFc Tag ELISA
0.1µg Human PVRIG, mFc Tag Per Well



Immobilized Human PVRIG, mFc Tag at 1µg/ml (100µl/well) on the plate. Dose response curve for Human Nectin-2, hFc Tag with the EC50 of 24.1ng/ml determined by ELISA.

SPR Data



Human Nectin-2, hFc Tag captured on CM5 Chip via Protein A can bind Human PVRIG, His Tag with an affinity constant of 6.27 µM as determined in SPR assay (Biacore T200).